

SAFETY SHOES

Allen[®]
Cooper
LEATHER LOGICS



DESMA MAKE DIRECT INJECTION PU MACHINE



Allen Cooper is a brand owned by Superhouse Ltd. which is one of the leading manufacturers and exporters of leather and leather products. Our export operations are spread across 35 countries, with marketing offices in UK, USA, Australia and UAE ably backed by manufacturing / administrative blocks placed at Agra, Bangalore, Chennai, Kanpur, Mumbai, Noida, and Unnao.

Safety of employees has been a major concern amongst the industrial units. We at Superhouse have developed a range of Safety Footwear totally customized to meet the requirements of Indian industries. Whatever be the area of activity - Airports, Chemical Industry, Petrochemical Industry, Acid/Alcohol Industries, Construction Business, Road Building, Cement Plants, Ship-Building, Defence Services, Heavy Engineering, Hotels, Mining or Railways, Allen Cooper range of safety shoes ensures that you can go about it with absolute certainty and confidence.

Infrastructure (Safety Footwear Division)

1,65,000 sq. ft. area with

- Five German made 24-station Desma Double Density Direct Injection PU machines.
- Two main groups (Italian made) Direct Injection PVC Machine.
- 24 C/C Ralph (British made) Direct Vulcanized.
- Goodyear welted conveyor from Czech Republic.

Manpower

650 qualified & experienced workers.

Capacity

7500 pairs per day.



FACTORY - SAFETY FOOTWEAR DIVISION



Allen Cooper is the only brand in India that produces safety shoes on Direct Injection PU, PU/TPU, Goodyear Welted and Direct Vulcanized Nitrile Rubber construction. With an aim to produce a range of shoes for workers operating in extremely hazardous environment, Allen Cooper safety shoes are manufactured as per (EN-20345), IS:15298 (Part I & II) & IS : 11226

Our years of experience in exports of safety shoes has helped us in developing shoes that cater to our domestic requirements. By learning from this experience, Allen Cooper has been able to create a niche in Safety Footwear by adhering to high quality standards and using the latest technology.

Allen Cooper safety shoes comply with essential safety measures. They are Oil, Acid and Abrasion Resistant, besides they are Antiskid, Antistatic & Electric Shock Resistant with a tolerance range between 100 Kilo Ohms and 1000 Mega Ohms.

Our range of safety shoes comes in various types of designs including low, medium and high ankle. These shoes are crafted from in house genuine Leather Uppers with Direct Injection Polyurethane, Direct Molded Rubber vulcanized soles. They are given anti-bacterial & anti-fungal treatment. Their soft chrome leather/non-woven liner lining absorbs sweat to keep the feet cool and odour-free. The high ankle design reduces the risk of sprains and the alloy toe caps provide protection from heavy falling objects up to 200 joules.



ADMIN BLOCK : SAFETY FOOTWEAR DIVISION

FEATURES

UPPER

Finest Genuine Leather with the thickness up to 2.0 MM is breathable, durable and water resistant up to 90 mins (optional as per German Din standard).

TOE CAP

Imported German ESJOT Alloy Toe Caps for complete toe protection. It can withstand impact resistance up to 200 Joules.

LINING

Soft Chrome Leather/Non Woven Fabric to provide extra comfort. Absorbs sweat and keeps the feet cool and odour free.

SOLE

Made of Dual Density Polyurethane for durability, flexibility and extra lightness. High-density outsole makes the footwear Abrasion Resistant.

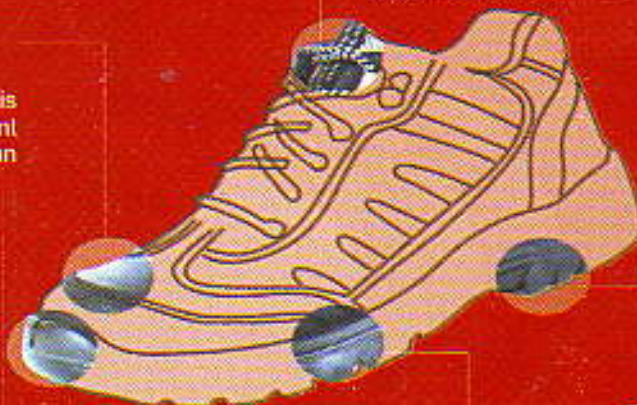
Our shoes made on Direct Vulcanized Rubber soles can withstand a temperature upto 300° C

INSOLE

Imported Antistatic Insoles protect feet and resist electric currents between 100 K ohms to 1000 M ohms.

CUSTOMIZATION

Entertain in case the requirement is more than 1000 pairs. Preferable Upper colours are brown and black.





Safety Shoes
with DIP PU Sole

Oil & Acid
Resistant

Slip
Resistant

Double
Density
Sole

Flexing
Resistance
as per
EN-20345
IS-15298



Antistatic / ESR



AC-1001

- Color : Black/Brown
- Upper : Leather(1.8 - 2.0mm)
- Lining : Non woven Fabric / Leather
- Steel Toe : Toe impact 200 J
- Insole : Non woven Strobel Construction
- Sole : DIP PU Double Density Sole
- Size : 5 - 12 English size
- Features : Oil, Acid & Alkali Resistant
Antistatic & Electric Shock Resistant
(Optional)

- Color : Black/Brown
- Upper : Leather(1.8 - 2.0mm)
- Lining : Non woven Fabric / Leather
- Steel Toe : Toe impact 200 J
- Insole : Non woven Strobel Construction
- Sole : DIP PU Double Density Sole
- Size : 5 - 12 English size
- Features : Oil, Acid & Alkali Resistant
Antistatic & Electric Shock
Resistant (Optional)

AC-1002



Safety Shoes with DIP PU Sole



AC-1003

- Color : Black/Brown
- Upper : Leather(1.8 - 2.0mm)
- Lining : Non woven Fabric / Leather
- Steel Toe : Toe impact 200 J
- Insole : Non woven Strobel Construction
- Sole : DIP PU Double Density Sole
- Size : 5 - 12 English size
- Features : Oil, Acid & Alkali Resistant
Antistatic, Electric shock Resistant &
Double Colour (Optional)

- Color : Black/Brown
- Upper : Leather(1.8 - 2.0mm)
- Lining : Non woven Fabric / Leather
- Steel Toe : Toe impact 200 J
- Insole : Non woven Strobel Construction
- Sole : DIP PU Double Density Sole
- Size : 5 - 12 English size
- Features : Oil, Acid & Alkali Resistant
Antistatic, Electric shock Resistant &
Double Colour (Optional)

AC-1004



DPU-305

- Color : Black/Brown
- Upper : Leather(1.8 - 2.0mm)
- Lining : Non woven Fabric / Leather
- Steel Toe : Toe impact 200 J
- Insole : Non woven Strobel Construction
- Sole : DIP PU Double Density Sole
- Size : 5 - 12 English size
- Features : Oil, Acid & Alkali Resistant
Antistatic, Electric shock Resistant &
Double Colour (Optional)





Safety Shoes with DMS Rubber Sole

Oil & Acid
Resistant

Slip
Resistant

Abrasion
Resistant

Antistatic / ESR

Direct Moulded
Rubber sole
as per IS : 11226

Heat Resistant upto 300° C



AC-2001

Lo-Ankle Derby

- Color : Black / Brown
- Upper : Leather (1.8 - 2.0 mm)
- Lining : Non woven Fabric / Leather
- Steel Toe : Impact Resistance upto 200 J
- Insole : Leather Board / Cellulose Board
- Sole : Direct Vulcanized Rubber sole
- Features : Oil & Acid Resistance, Heat Resistance upto 300° C, Antistatic & Electric Shock Resistant (Optional)

Medium Ankle Jodhpuri Design

- Color : Black / Brown
- Upper : Leather (1.8 - 2.0 mm)
- Lining : Non woven Fabric / Leather
- Steel Toe : Impact Resistance upto 200 J
- Insole : Leather Board / Cellulose Board
- Sole : Direct Vulcanized Rubber sole
- Features : Oil & Acid Resistance, Heat Resistance upto 300° C, Antistatic & Electric Shock Resistant (Optional)

AC-2002





AC-2003

Hi-Ankle Full Bellow Tongue

- Color : Black / Brown
- Upper : Leather (1.8 - 2.0 mm)
- Lining : Non woven Fabric / Leather
- Steel Toe : Impact Resistance upto 200 J
- Insole : Leather Board / Cellulose Board
- Sole : Direct Vulcanized Rubber sole
- Features : Oil & Acid Resistance, Heat Resistance upto 300° C, Antistatic & Electric Shock Resistant (Optional)

Plain Vamp Slipon

- Color : Black / Brown
- Upper : Leather (1.8 - 2.0 mm)
- Lining : Non woven Fabric / Leather
- Steel Toe : Impact Resistance upto 200 J
- Insole : Leather Board / Cellulose Board
- Sole : Direct Vulcanized Rubber sole
- Features : Oil & Acid Resistance, Heat Resistance upto 300° C, Antistatic & Electric Shock Resistant (Optional)

DPU-306



DERBY SHOES BLACK DMS

Derby Shoes Black DMS

- Color : Black
- Upper : Leather (1.8 - 2.0 mm)
- Lining : Non woven Fabric / Leather
- Toe : Thermo Plastic Hard Toe
- Insole : Leather Board / Cellulose Board
- Sole : Direct Vulcanized Rubber sole





Safety Shoes for Ladies

Oil & Acid Resistant

Slip Resistant

PU Sole

Flat Heel for extended comfort

Antistatic



AC-4001

Belly Design

- Color : Black/Brown
- Upper : Leather(1.8 - 2.0mm)
- Lining : Non woven Fabric / Leather
- Steel Toe : Toe impact 200 J (Optional)
- Insole : Cellulose Board
- Sole : PU (Stuck on Process)
- Size : 3 - 8 English size
- Features : Oil, Acid & Alkali Resistant

3 Eyelet Derby

- Color : Black/Brown
- Upper : Leather(1.8 - 2.0mm)
- Lining : Non woven Fabric / Leather
- Steel Toe : Toe impact 200 J (Optional)
- Insole : Cellulose Board
- Sole : PU (Stuck on Process)
- Size : 3 - 8 English size
- Features : Oil, Acid & Alkali Resistant



AC-4002







AC-4003

Slipon

- Color : Black/Brown
- Upper : Leather(1.8 - 2.0mm)
- Lining : Non woven Fabric / Leather
- Steel Toe : Toe impact 200 J (Optional)
- Insole : Cellulose Board
- Sole : PU (Stuck on Process)
- Size : 3 - 8 English size
- Features : Oil, Acid & Alkali Resistant

3 Eyelet Board Toe Derby

- Color : Black/Brown
- Upper : Leather(1.8 - 2.0mm)
- Lining : Non woven Fabric / Leather
- Steel Toe : Toe impact 200 J (Optional)
- Insole : Cellulose Board
- Sole : PU (Stuck on Process)
- Size : 3 - 8 English size
- Features : Oil, Acid & Alkali Resistant

AC-4004



Toe Cap Oxford

- Color : Black/Brown
- Upper : Leather(1.8 - 2.0mm)
- Lining : Non woven Fabric / Leather
- Steel Toe : Toe impact 200 J (Optional)
- Insole : Cellulose Board
- Sole : PU (Stuck on Process)
- Size : 3 - 8 English size
- Features : Oil, Acid & Alkali Resistant

AC-4005





Shoes for Special Application



RIGGER BOOT

Rigger Boot for Oil Fields

- Color : Black/Brown
- Upper : Leather(1.8 - 2.0mm)
- Lining : Non woven Fabric
- Steel Toe : Toe impact 200 j As per IS/EN Standard
- Insole : Non woven (Strobel Construction)
- Sole : DIP PU Sole
- Size : 5 - 12 English size
- Features : Oil, Acid & Alkali Resistant
Antistatic & Electric
Shock Resistant (Optional)

Firemen's Boot Welleington Design

- Color : Black / Brown
- Upper : Leather (1.8 - 2.0 mm)
- Lining : Non woven Fabric / Leather
- Steel Toe Imported as per EN-345
- Insole : Leather Board / Cellulose Board
- Sole : Direct vulcanized Rubber Sole
- Features Oil & Acid resistant
Heat Resistance upto 300° C
Anti Penetration & Electric Shock Proof

FIREMEN'S BOOT





JUNGLE BOOT

Jungle Boot

- Color : Olive Green
- Upper : Leather & Textile as per IS Standard
- Lining : Non woven Fabric (Optional)
- Toe : Thermo Plastic Hard Toe
- Insole : Non woven (Strobel Construction)
- Sole : DIP PU Sole
- Size : 5 - 12 English size

Ankle Boot for use of Police Personnel

- Color : Black/Brown
- Upper : Zuggrain/Plain Leather
- Lining : Non woven Fabric (Optional)
- Toe : Thermo Plastic Hard Toe
- Insole : Non woven (Strobel Construction)
- Sole : DIP PU Sole
- Size : 5 - 12 English size

ANKLE BOOT



DRILL BOOT

Drill Boot For use of Police Personnel

- Color : Black/Brown
- Upper : Zuggrain/Plain Leather
- Lining : Non woven Fabric (Optional)
- Toe : Thermo Plastic Hard Toe
- Insole : Non woven (Strobel Construction)
- Sole : DIP PU Sole
- Size : 5 - 12 English size





Superhouse Limited

Safety Footwear Division : B-6, Site-I, Industrial Area, Unnao - 209 801 (U.P.)
Tel. : +91 515 2829656, 2829384, 2829675 • Fax : +91 515 2829085, 2829190
E-mail : sales@superhousegroup.com • website : www.superhousegroup.com

